



Mill Lane Trading Estate, The Mill, Eardiston, Tenbury Wells, WR15 8JJ

A 1.8 industrial site consisting of 13 tenancies and ancillary income from parking - producing £152,000 per annum

Summary

| | |
|-----------------------|--|
| Tenure | For Sale |
| Available Size | 33,311 sq ft / 3,094.69 sq m |
| Price | Offers in the region of £2,000,000 |
| Business Rates | To be provided on a requested basis |
| EPC Rating | EPC exempt - Industrial sites, workshops and non-residential agricultural buildings with low energy demand |

Key Points

- Reversionary leases
- Picturesque entry and surroundings
- Just off A443
- Asset management opportunities
- 33,000sqft
- Eardiston location
- £152,000 per annum
- 6 miles east of Tenbury Wells

Mill Lane Trading Estate, The Mill, Eardiston, Tenbury Wells, WR15 8JJ

DESCRIPTION

Mill Lane Trading Estate is a rural estate in the village of Eardiston consisting of 15 income streams across 13 tenancies and 2 ancillary revenues spanning a 1.8 acre site in the picturesque surroundings of the River Teme. The site is comprised of 3 separate structures, each containing several units, with a further detached Grade II listed building at the forefront of the shared yard entrance. Built of steel-made structures and corrugated metal panelling roofing, the estate is equipped with two access points and common yards.

LOCATION

Located just off the A443 in Eardiston, Mill Lane Industrial Estate sits circa 6 miles east of Tenbury Wells town and 3.5 miles east of A456. The location presents a strategic opportunity for businesses seeking a balance between a tranquil working environment and proximity to local and regional infrastructure. With its versatile surroundings and potential for various commercial uses, this property offers an attractive prospect for discerning investors or businesses looking to establish or expand their operations in a thriving area.

VIEWINGS

Strictly by appointment with Shepherd Commercial

VIDEO

- Drone Footage - <https://shorturl.at/LOFuC>



Viewing & Further Information

KAINE ARKINSON

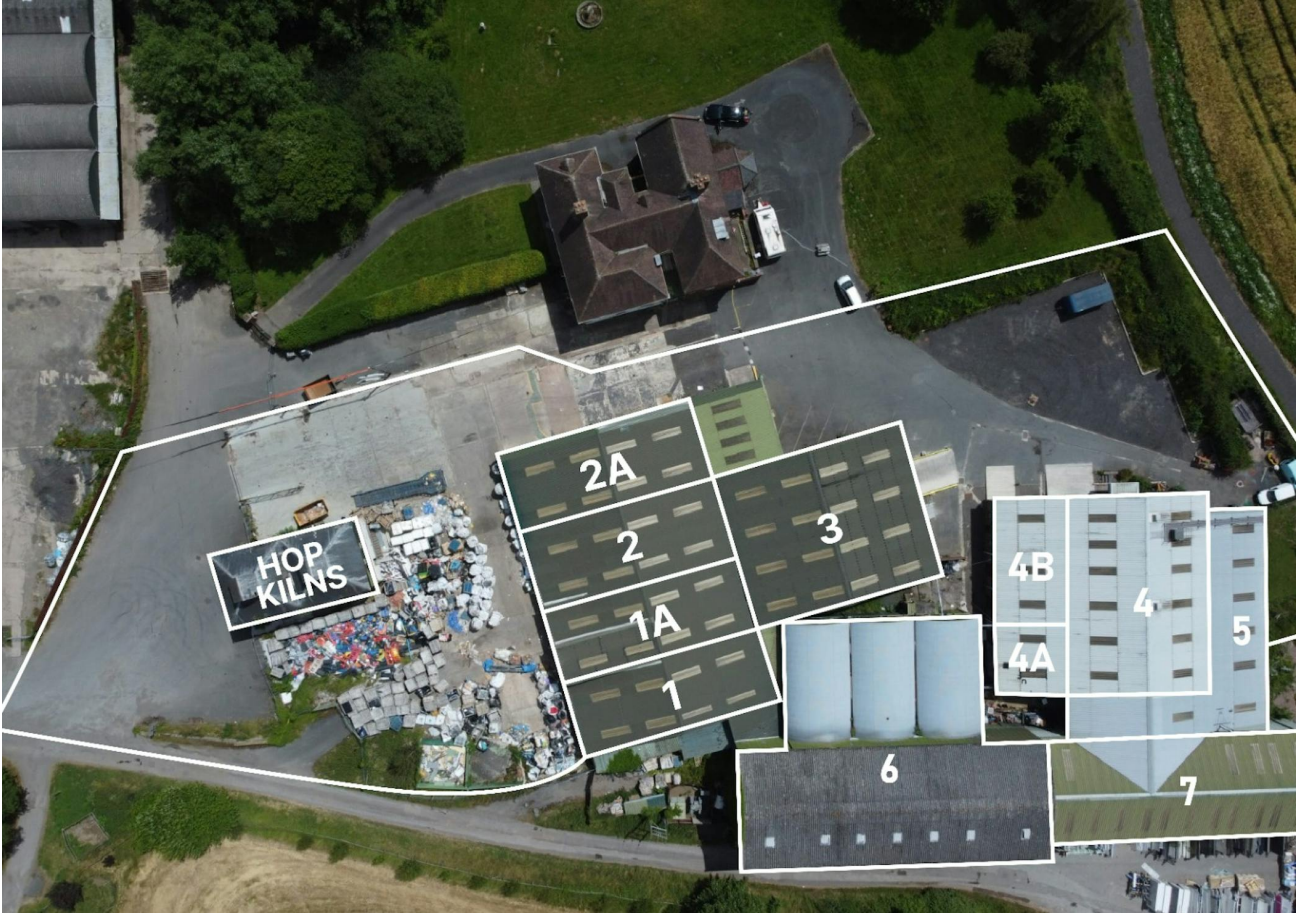
01564 778 890 | 07487 521 802

kaine@shepcom.com

The above information contained within this email is sent subject to contract. These particulars are for general information only and do not constitute any part of an offer or contract. All statements contained therein are made without responsibility on the part of the vendors or lessors and are not to be relied upon as statement or representation of fact. Intending purchasers or lessees must satisfy themselves, by inspection, or otherwise, as to the correctness of each of the statements of dimensions contained in these particulars. Generated on 03/10/2024



SHEPHERD
COMMERCIAL



SHEPHERD
COMMERCIAL

