

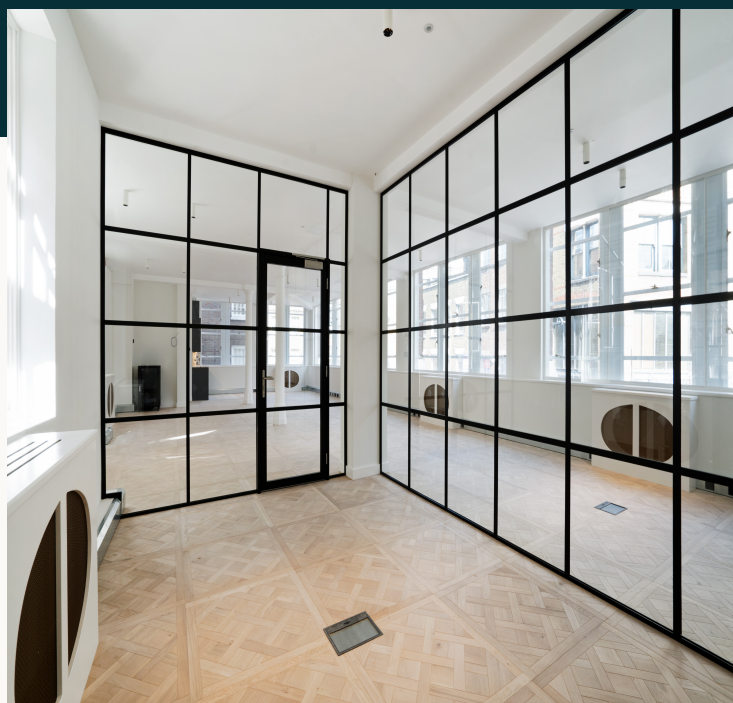
# Greenhill House

90-93 Cowcross Street, London EC1M 6BH

Rental Options: Cat-A: £6,650 pcm  
Fully-Fitted: £7,300 pcm  
Fully-Managed: 14,500pcm



One of Clerkenwell's leading examples of commercial Victorian architecture, built on an iron frame with brick facades and attractive original window detailing.



Only minutes-walk from Farringdon's Cross Rail, Thameslink and underground stations, the original brick and iron features of this historic commercial building combines light and charm with the modern benefits of London's best transport connections and buzzing local Clerkenwell amenities of bars, shops, restaurants and food markets.

## Key Facts

Cat-A: £6,650 pcm  
Fully-Fitted: £7,300 pcm  
Fully-Managed: £14,500 pcm

UNIT SIZE: 1,347 sq ft  
DESKS: 16 - 26  
RENT: From £6,650 pcm

BUILDING SIZE: 15,455 sqft  
BUILDING FLOORS : 4  
UNIT: 1st floor East

## Highlights of your New Office:

- Your own private suite
- Workstations, kitchen, meeting room & informal break out area
- Personalised fit-out & furniture with your choice of configuration
- Comfort cooling and heating
- Historic architectural features
- Your own company branding in reception

Fully managed office package available separately



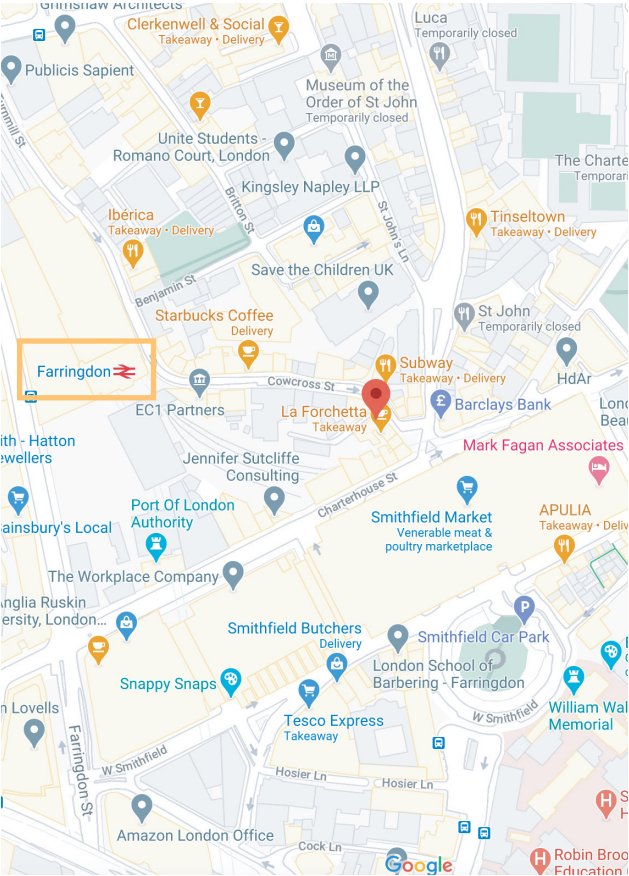


26 PERSON OFFICE  
OTHER LAYOUTS AVAILABLE

Tailor-made, turn-key office solution giving you your own private suite, with your choice of layout, furniture and dedicated IT services.

What's included in the price:

Service	Cat-A	Fitted	Managed
Rent	✓	✓	✓
Rates			✓
Service Charge			✓
Fit Out & Furniture		✓	✓
Fibre Broadband			✓
Utilities			✓
Mobile Door Entry Customer	✓	✓	✓
App	✓	✓	✓
Customer Services Manager			✓
24/7 Helpdesk			✓
Cleaning			✓
Tech Support			✓
Repairs & Maintenance			✓
Health & Safety			✓
Rent/pcm	£6,650	£7,300	£14,500



Greenhill House  
90-93 Cowcross Street  
London  
EC1M 6BH

TEL : 0207 930 5724  
HELLO@GREENHILLHOUSE.ME