

High Street, Whitstable, CT5

£25,000

EXCLUSIVE OF OUTGOINGS



Highly Visible Retail Property to Let

**A Double Fronted Lock up Shop in the heart of Whitstable,
133.5 sq m (1,437 sq ft)**

KEYNOTES

- ✓ FANTASTIC CENTRAL LOCATION
- ✓ PRIME LOCATION IN WHITSTABLE
- ✓ GROUND FLOOR SHOP
- ✓ CORNER UNIT WITH BEAUTIFUL RETURN FRONTAGE
- ✓ HIGHLY VISIBLE
- ✓ GREAT FOOTFALL

Enquiries



=44 1227 770587



vanessa@azurepc.co.uk

Azure Property Consultants Limited
35 Middle Wall, Whitstable, Kent CT5 1BJ - Tel : +44 1227 770587
Registered in England and Wales- No. 4985656
www.azurepc.co.uk
www.facebook.com/AzurePropertyConsultants



Location

Location

The seaside town of Whitstable is located on the picturesque North Kent coast, 60 miles from central London and 7 miles north of the historical city of Canterbury. Famous for its working harbour and native oysters the town proves popular with both tourists and residents alike. From its stunning coastline with a variety of water sports to the popular high street brimming with independently run cafes, boutiques, restaurants and pubs, there is plenty to see and do. The main line train station provides fast and frequent links to both London St Pancras & London Victoria, as well as regular buses departing from numerous stops throughout the town linking Whitstable to the surrounding areas and beyond. A number of popular infant and junior schools are found locally in the town with both grammar schools and private schools easily accessible in Canterbury.

Description

113 High Street, a beautiful double fronted lock up shop located in the heart of Whitstable's popular town centre. Positioned on a corner on the high street in the centre of the town, just a stone's throw from the beach and a short walk to the train station. Fantastic footfall.

Lease

Property is available on a new lease. Terms to be agreed.

Accommodation

1437sq ft. (133.5sq mt)

Use

Class E(or other uses to Planning).

EPC

Rating B

Legal Costs

Each party is to pay their own legal costs.

Code for Leasing Business Premises

We refer you to the Code for Leasing Business Premises in England and Wales 2007, available at <http://www.leasingbusinesspremises.co.uk/>

Viewings

All viewings are strictly by appointment through Azure Property Consultants Ltd

For further information please contact:

Azure Property Consultants Ltd

Attn. Vanessa Mokwena

Tel. 01227 770587

Mobile: 07780398553

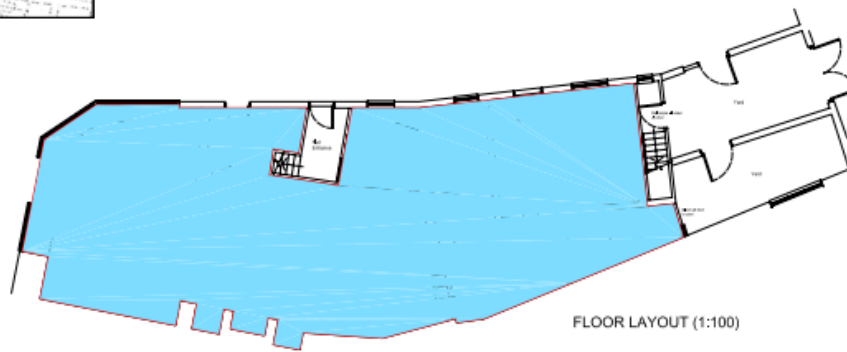
vanessa@azurepc.co.uk

SUBJECT TO CONTRACT & EXCLUSIVE OF VAT

Azure Property Consultants Ltd for themselves and for the Vendors or Lessors of these properties whose Agents they are give notice that the particulars are set out as a general outline only for the guidance of intending purchasers or lessees and do not constitute nor constitute part of an offer or contract. All descriptions, dimensions, references to condition and necessary permissions for use and occupation and other details are given in good faith and are believed to be correct but any intending purchasers or tenants should not rely on them as statements or representations of fact but must satisfy themselves by inspection or otherwise as to the correctness of each of them. No person in the employment of Azure Property Consultants Ltd has any authority to make or give any representation or warranty whatsoever in relation to these properties.



SITE LOCATION PLAN (1:1250)



FLOOR LAYOUT (1:100)

113 HIGH STREET, WHITSTABLE, KENT, CT5 1AY

PROJECT NAME 113 HIGH STREET, WHITSTABLE, KENT, CT5 1AY	DATE 10/10/2011	DESIGNER SOUTH EAST ARCHITECTURAL SERVICES LTD	SCALE 1:100
PROJECT NO 060150LPH01	DATE 10/10/2011	SCALE 1:100	SCALE 1:100

