



1 Castle Lane, London,
SW1E 6DR

OFFICES TO RENT
1,337 - 4,491 SQ FT

tuckerman.co.uk
020 7222 5511



Amenities

Fitted & furnished offices

Raised floors

Passenger lift

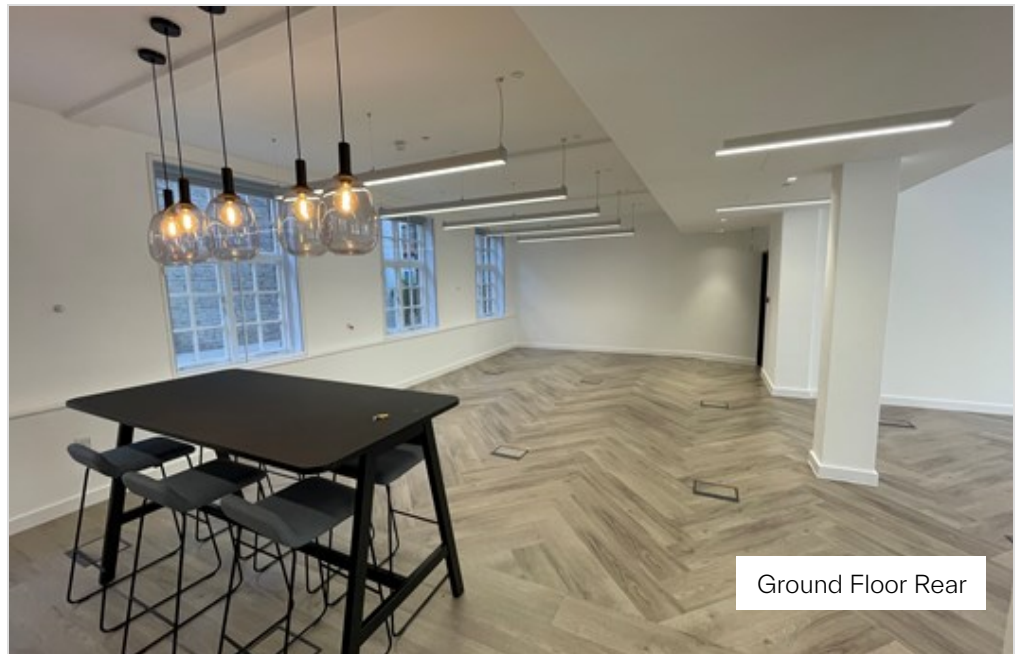
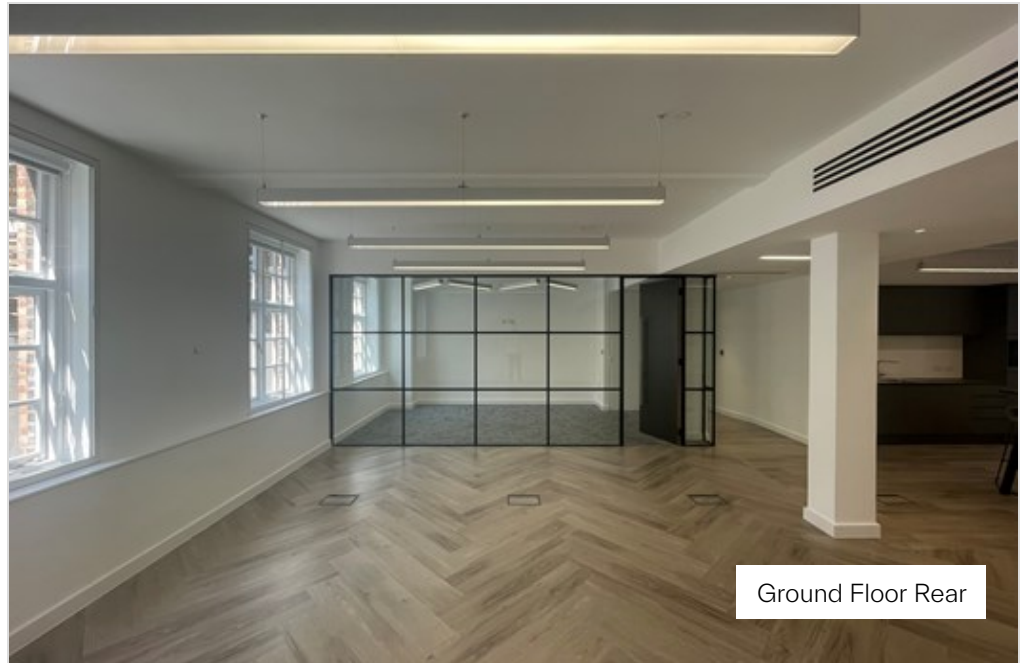
Impressive entrance hall

Air conditioning

LED Lighting

Excellent natural light

24-hour access



Accommodation

Unit	Size (PSF)	Rent (PSF)	Bus. Rates (PSF)	Srv. Charge (PSF)	Total Cost PA	Total Cost PCM	Availability
Ground Rear Fitted	1,337	£80.00	£26.54	£9.17	£154,704.27	£12,892.02	Available
2nd Floor Front Fitted & Finished	1,690	£90.00	£27.62	£9.17	£214,275.10	£17,856.26	July 2025
2nd Floor Rear Fitted	1,464	£85.00	£27.97	£9.17	£178,812.96	£14,901.08	July 2025
TOTAL	4,491						

*all figures are approximate and exclusive of VAT



Description

Fully Fitted & Furnished Self-Contained & Air Conditioned Offices Space
Located In Victoria

The offices are situated on the ground and second floors which benefits from excellent natural light and a private courtyard on the lower ground floor. The offices are fully fitted and comprise excellent office space for occupiers seeking quality office space in Victoria.

The ground floor rear and second floor rear units are offered as fitted space, whilst the 2nd floor front is available fitted and furnished.

1 Castle Lane is located on the south side of Castle Lane between Palace Street and Buckingham Gate close the Cardinal Place development providing an abundance of shopping and restaurants. Victoria mainline and Underground Stations and St James's Park Underground Station (Victoria, District and Circle together with Gatwick Express) are all within easy reach.

1 Castle Lane, London, SW1E 6DR

Further Information

Lease Information

By way of a new lease(s) for a term by arrangement, direct from the freeholder

Rent

£80.00 - £90.00 per sq ft.

Service Charge

£9.17 per sq ft.

Rates

£26.54 - £27.97 per sq ft.

EPC

Available upon request.

Scott Fisher

Jade Henson-Amphlett

Tuckerman

Tuckerman

07890 572225

07921 452727

sfisher@tuckerman.co.uk

jhensona@tuckerman.co.uk

Jamie Christian

Tuckerman

07561 852 667

jchristian@tuckerman.co.uk

Anti-Money Laundering

If applicable, a successful purchaser/tenant will be required to provide the usual information to satisfy AML requirements when Heads of Terms are agreed.

Subject to contract. Tuckerman for themselves and the vendor of this property give notice that these particulars do not form, or form part of, any offer or contract. They are intended to give fair description of the property and whilst every effort has been made to ensure their accuracy this cannot be guaranteed. Any intending purchaser must therefore satisfy themselves by inspection or otherwise. Neither Tuckerman nor any of its employees, has any authority to make or give any further representations or warranty whatsoever in relation to this property. All prices and rents quoted are net of vat.