

MISBOURNE WORKS

CHESHAM, HP5 1PE

FOREST
REAL ESTATE

MISBOURNE WORKS

TO LET

1,583 SQ FT

Workshop/office available for lease with up to 3 parking spaces.

Key Features

- Gated Forecourt
- Gas Heating
- WC
- 3 Parking Spaces
- Kitchenette
- First Floor Offices

Misbourne Works
Chesham, HP5 1PE





Description

This premises consists of a ground floor warehouse with offices on the first floor.

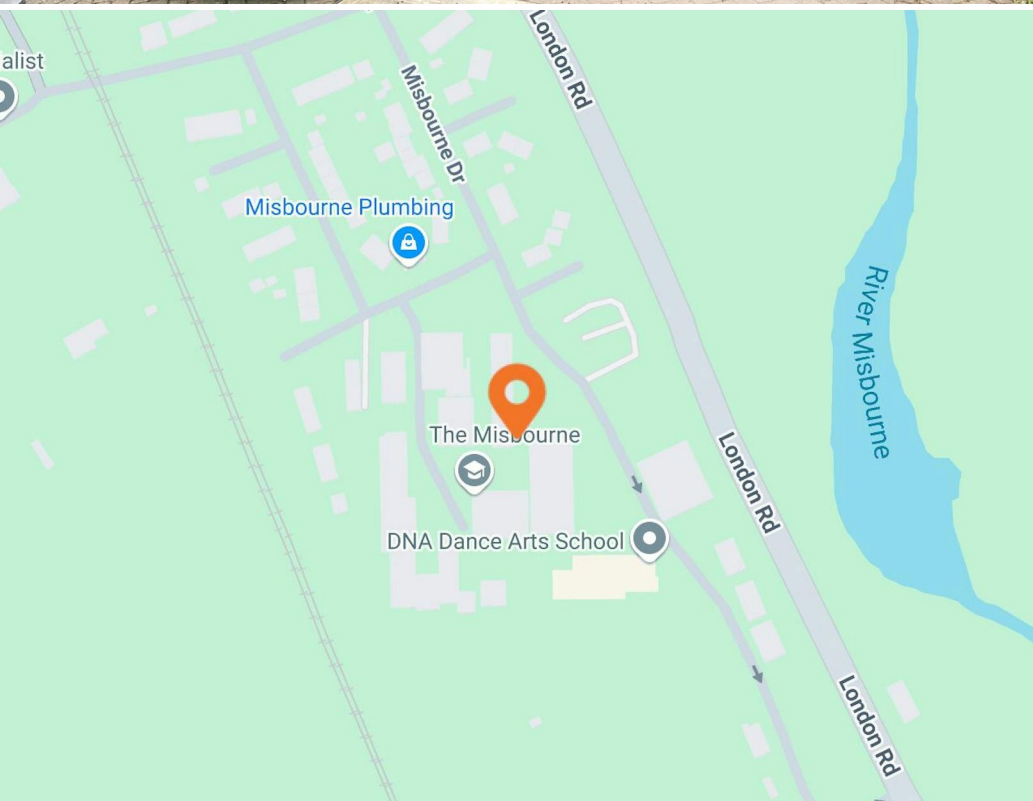
Benefitting from a gated forecourt, the site provides external storage space as well as parking for up to 3 parking spaces.

Inside, there is a private kitchenette and WC.

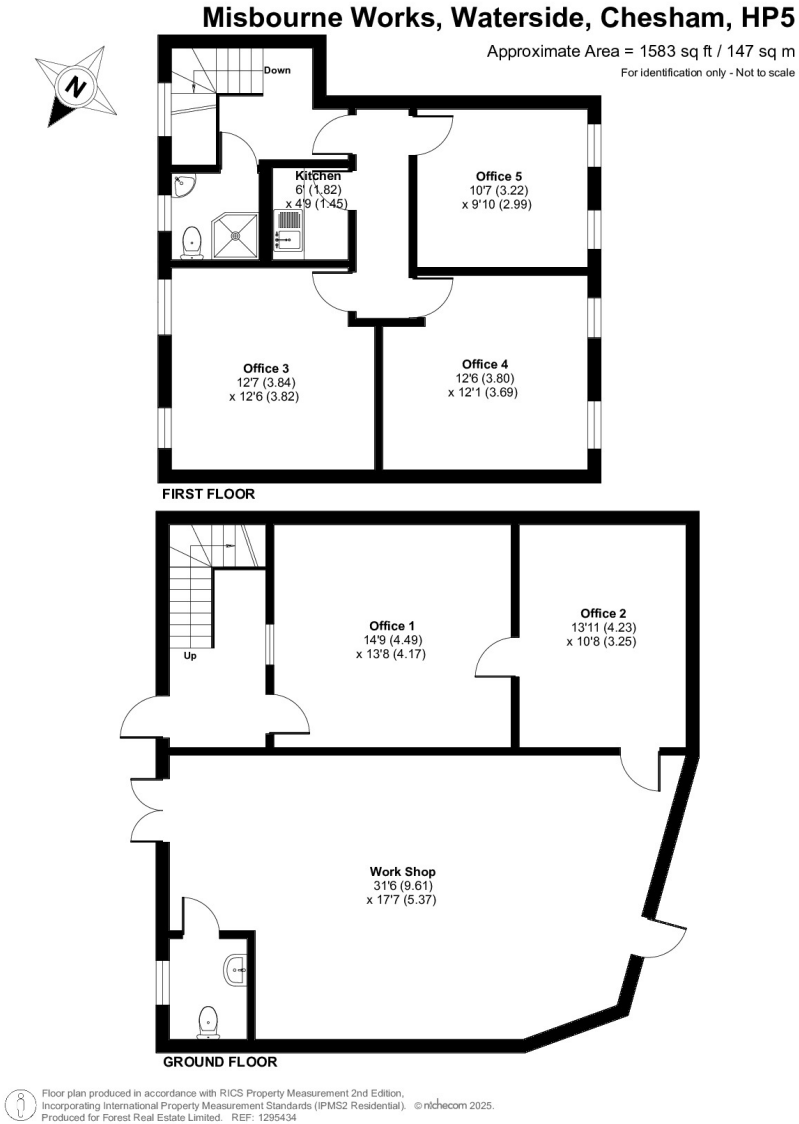
Location

Chesham Town Centre and its London Underground station (Metropolitan Line) are only a short distance away, offering exceptional connectivity to Central London and the wider South East region.

With the easy access to the M25 (Junction 18 & 20) and M1 motorways, as well as close proximity to the A41 dual carriageway, the location is ideal for businesses requiring efficient logistics, warehousing, or regional distribution.







Availability

Lease	New Lease
Rent	£24,000 per annum
Rates	On application
Service Charge	N/A
VAT	Not applicable
EPC	D (100)

Contact

Cormac Sears
020 3355 1555 | 07788 235 185
cormac@forestrealestate.co.uk

Ethan Shine
020 3355 1555 | 07792 781 096
ethan@forestrealestate.co.uk

London Office Team
55 St John Street, London, EC1M 4AN
020 3370 4470

London Industrial Team
1 Bridge Lane, London, NW11 0EA
020 3355 1555

Hertfordshire Team
1a Local Board Road, Watford, WD17 2JP
01923 911 007

www.forestrealestate.co.uk
info@forestrealestate.co.uk

Misbourne Works
Chesham, HP5 1PE

