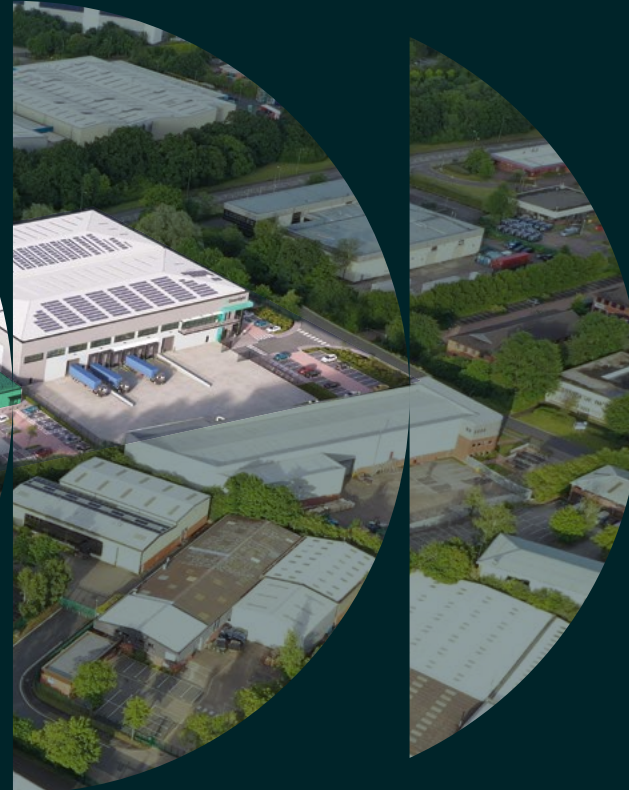




Greenlight  
**Redditch**

Redditch, B98 9HJ

**Warehouse /  
industrial units  
ranging from  
10,000 – 67,475 sq ft**



To Let - Available Q1 2026

# A progressive new development

Greenlight Redditch is a flexible, first-class industrial development, ideally located just 5 minutes from Redditch and 22 minutes from Birmingham Airport.

Aiming for the highest sustainability rating achievable, we utilise cutting edge technologies to minimise environmental impact.

Our unwavering dedication to eco-friendly projects reduced costs for the occupier and offers enhanced wellbeing for employees.



**82,253**  
population in Redditch

**73.9%**  
of the local population are  
economically active

**12,746**  
under the age of 30 are  
available to work in Redditch

**9.2 Mil Sq Ft**  
of industrial space in the  
Redditch submarket



Targeting  
EPC A+



EV Charging  
Infrastructure



Net Zero Carbon  
Operations  
Enabled



Highly Efficient  
Thermal  
Envelope



10% Roof  
Lighting



Targeting  
BREEAM  
Outstanding



PV Panels  
Installed



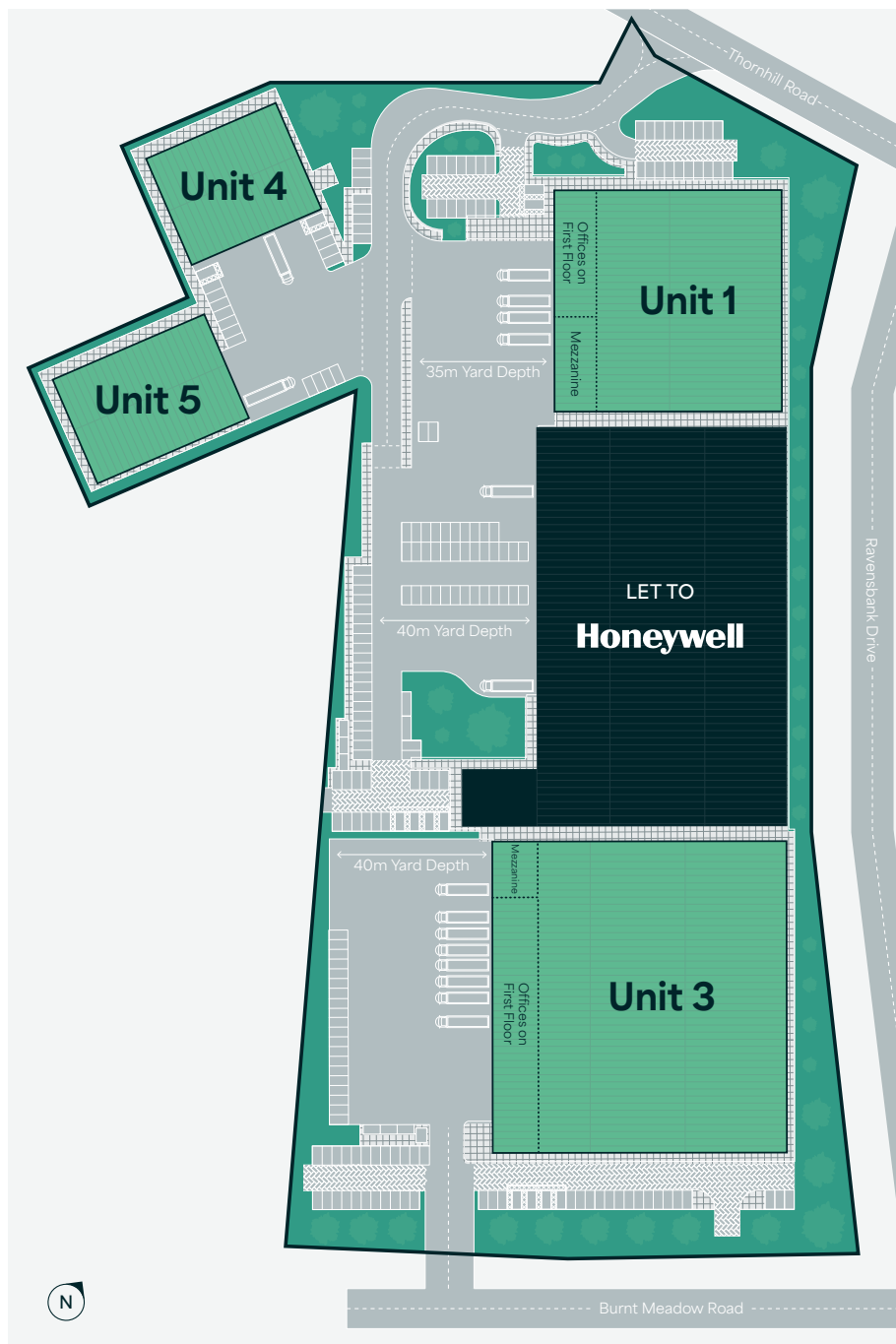
Low Air  
Permeability



Cycle  
Parking



Steel Frame Can  
Accommodate PV  
Panels Across the Roof



Unit 1	Sq M (GIA)	Sq Ft (GIA)
Warehouse	2,926	31,500
Office	331	3,560
Mezzanine	249	2,680
<b>Total</b>	<b>3,506</b>	<b>37,740</b>

Unit 3	Sq M (GIA)	Sq Ft (GIA)
Warehouse	5,435	58,500
Office	676	7,275
Mezzanine	158	1,700
<b>Total</b>	<b>6,269</b>	<b>67,475</b>

Unit 4	Sq M (GIA)	Sq Ft (GIA)
	929	10,000

Unit 5	Sq M (GIA)	Sq Ft (GIA)
	1,068	11,500



Loading Doors:  
Unit 1 - 2 dock / 2 level  
Unit 3 - 6 dock / 2 level  
Unit 4 - 1 level  
Unit 5 - 1 level



50 KN/sq m  
Floor Loading



Secure Yard\*:  
Unit 1 - 35m  
Unit 3 - 40m



Comfort Cooling  
& Heating



Eaves Height:  
Unit 1 - 10m  
Unit 3 - 12m  
Unit 4 - 8m  
Unit 5 - 8m



Car Parking Spaces:  
Unit 1 - 35  
Unit 3 - 65  
Unit 4 - 12  
Unit 5 - 14



EV Charging Spaces:  
Unit 1 - 4  
Unit 3 - 8  
Unit 4 - 2  
Unit 5 - 2



Power Supply:  
Unit 1 - 500kVA  
Unit 3 - 750kVA  
Unit 4 - 200kVA  
Unit 5 - 200kVA



Office  
Balcony\*



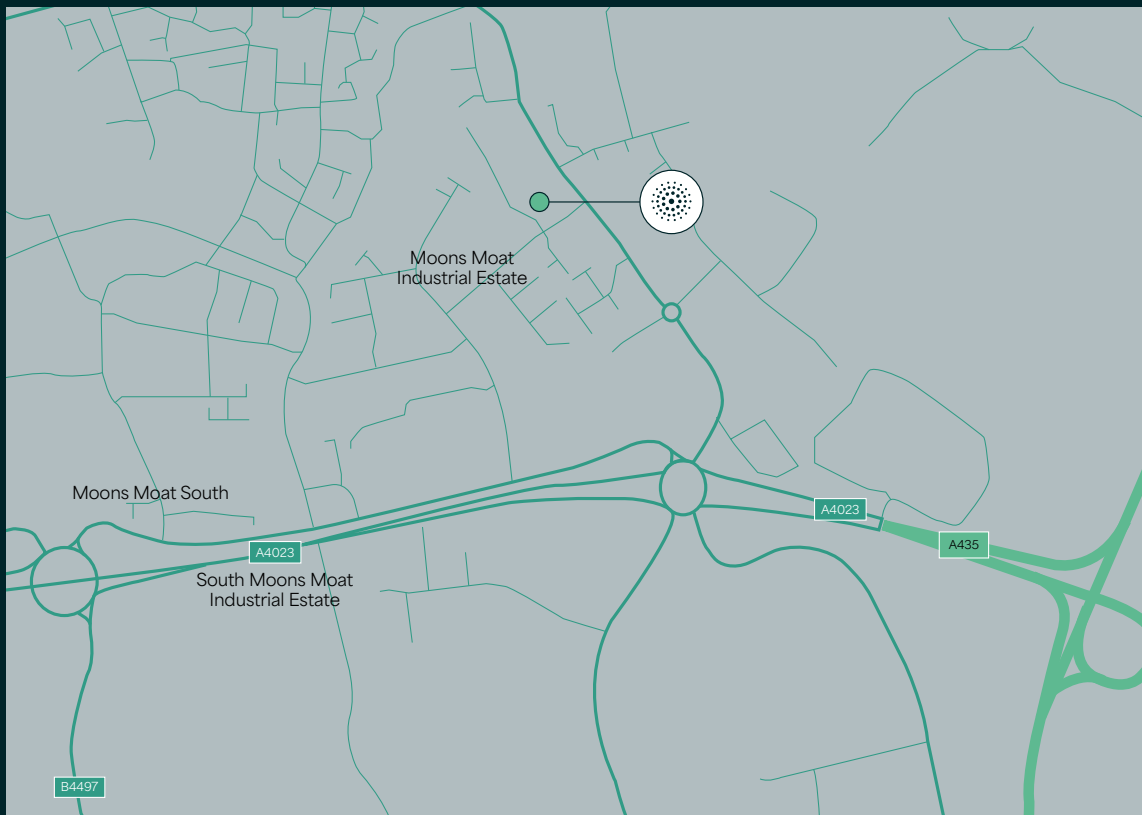
CAT A Office  
with LED Lights\*

\* Units 1 and 3 only



Greenlight  
**Redditch**

Redditch, B98 9HJ



**Burnt Meadow Road, Moons Moat North,  
Redditch, B98 9HJ**  
[///supply.global.cattle](http://supply.global.cattle)

[greenlight-urbanlogistics.com/redditch](http://greenlight-urbanlogistics.com/redditch)

The Agents for themselves and for the vendors or lessors of the property whose agents they are give notice that, (i) these particulars are given without responsibility of The Agents or the Vendors or Lessors as a general outline only, for the guidance of prospective purchasers or tenants, and do not constitute the whole or any part of an offer or contract; (ii) The Agents cannot guarantee the accuracy of any description, dimension, references to condition, necessary permissions for use and occupation and other details contained herein and any prospective purchasers or tenants should not rely on them as statements or representations of fact but must satisfy themselves by inspection or otherwise as to the accuracy of each of them; (iii) no employee of The Agents has any authority to make or give any representation or enter into any contract whatsoever in relation to the property; (iv) VAT may be payable on the purchase price and/or rent, all figures are inclusive of VAT, intending purchasers or lessees must satisfy themselves as to the applicable VAT position, if necessary by taking appropriate professional advice; (v) The Agents will not be liable, in negligence or otherwise, for any loss arising from the use of these particulars. Maps are approximate and for illustrative purposes only. February 2025.



Christian Smith  
07808 784 789  
[christian.smith@savills.com](mailto:christian.smith@savills.com)

Chris Hobday  
07552 558 551  
[chris.hobday@savills.com](mailto:chris.hobday@savills.com)



Carl Durant  
07971 404 655  
[carl.durant@jll.com](mailto:carl.durant@jll.com)

Steven Jagers  
07873 995 259  
[steven.jagers@jll.com](mailto:steven.jagers@jll.com)

**CBRE**

Peter Monks  
07766 504 989  
[peter.monks@cbre.com](mailto:peter.monks@cbre.com)

Luke Thacker  
07733 308 558  
[luke.thacker@cbre.com](mailto:luke.thacker@cbre.com)

Client funds advised by

**DELANCEY**  
**Coltham**