



Short Term / To Let

Unit 6 Heathrow International Trading Estate

Heathrow TW4 6HB

Assignment/Subletting

**5,813 SQ FT
(540 SQ M)**

Key Points:

- Short-Term / Economical Opportunity
- Available immediately
- 7.4m eaves height
- 1 level access loading door
- Allocated parking
- 24-hour security
- Proximity to Heathrow
- Warehouse heating & kitchenette



Visit: [Colliers.com](https://www.colliers.com)
01895 813344

Description

The unit is a mid-terrace industrial unit, benefitting from a clear height of 7.4m with 1 loading door and fitted offices on ground level, creating a clear span warehouse space.

The unit also benefits from 24/7 access and security, allocated parking and warehouse heating.

Location

Heathrow International Trading Estate is located in the heart of Heathrow. The estate is approximately 3.6 miles from Heathrow Cargo Centre and 1.7 miles from Junction 3 of the M4, providing easy access to Central London and the national motorway network.

Hatton Cross Underground Station is approx. 1.3 miles from the estate, offering good railway access to Central London via the Piccadilly Line.



Floor areas

The Property has the following approximate gross internal (GIA) floor areas

	Area (Sq ft.)	Area (Sqm)
Warehouse	5,103	644
Ground & FF Offices	710	66
Total	5,813	540

Rent

Rent on Application

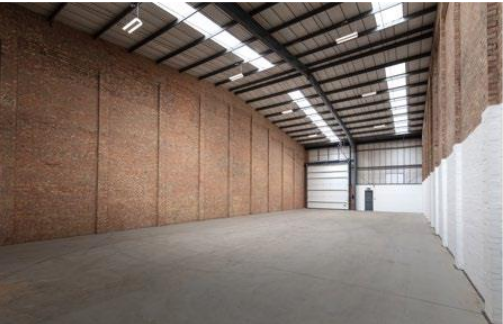
Energy Performance Rating

B - 41

Terms

The unit is available by way of an assignment / sublet until December 2026.

Further details available upon request.



Business Rates

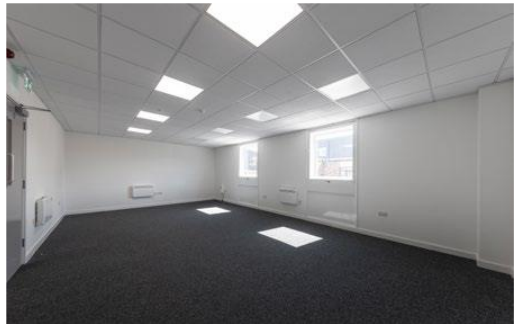
Interested parties are advised to make their own enquires with the local council.

Legal Costs

Each party will be responsible for their own legal costs incurred in this transaction.

VAT

All prices and other costs quoted exclusive of VAT.



Indicative Photos*



Patrick Rosso

Director

Patrick.Rosso@colliers.com
+44 7825 571048



Stan Gibson

Surveyor

Stanley.Gibson@colliers.com
+44 7776 605378



YC Lau

Graduate Surveyor

YC.Lau@colliers.com
+44 7551 383904

colliers.com



95 Wigmore Street

London W1U 1FF

United Kingdom

Colliers (NASDAQ, TSX: CIGI) is a leading diversified professional services and investment management company. With operations in 68 countries, our 19,000 enterprising professionals work collaboratively to provide expert real estate and investment advice to clients. For more than 29 years, our experienced leadership with significant inside ownership has delivered compound annual investment returns of approximately 20% for shareholders. With annual revenues of \$4.3 billion and \$96 billion of assets under management, Colliers maximizes the potential of property and real assets to accelerate the success of our clients, our investors and our people. Learn more at corporate.colliers.com, X [@Colliers](https://twitter.com/Colliers) or [LinkedIn](https://www.linkedin.com/company/colliers).

